

POS Thermal Receipt Printer

A11 Prime



Installation Guide
JPOS Driver

Table of Contents

1. Manual Information	3
2. Usage Environment	4
2-1 Features.....	4
2-2 Supported Operating Systems	4
2-3 Supported Interface	4
2-4 Java Environment	4
3. Installation	5
3-1 JavaPOS Driver Installation	5
3-2 JDK & JRE installation	7
3-3 Java communication files installation	7
3-4 Environment Variables configuration	8
4. JavaPOS Configuration Utility Setting	9
4-1 POSPrinter Registration	9
4-2 CashDrawer Registration.....	12
4-3 Trace Setting	13
4-4 Port Range Setting	14
4-5 Jpos.xml New / Open / Sava As	15
5. Posbank JPOS Test Program	16
6. Sample Source	17
6-1 POS Printer Samples	17
6-2 CashDrawer Samples.....	17
7. Precautions.....	18

1. Manual Information

This manual provides information on the Posbank JavaPOS driver as well as on the usage POS printer products offered by Posbank.

The following are terms contained in this manual.

- JDK : Java Development Kit
- JRE : Java Runtime Environment
- JavaPOS : Java Point of Sale
- JCL Utility : JavaPOS Configuration Utility

[Reference Websites]

<http://www.javapos.com> : Java POS committee website

<http://java.sun.com> : Official Java website

<http://www.posbank.com> : Posbank printers website

We at Posbank maintain ongoing efforts to enhance and upgrade the functions and quality of all our products. In following, product specifications and/or user manual content may be changed without prior notice.

2. Usage Environment

2-1 Features

Using standard API functions, the POS System can be developed more quickly and easily, and applications can be developed independently from the operating system.

2-2 Supported Operating Systems

- Windows XP (32/64bit)
- Windows Server 2003 (32/64bit)
- Windows Vista (32/64bit)
- Windows 7 (32/64bit)
- Windows 8 (32/64bit)
- Windows 10 (32/64bit)

2-3 Supported Interface

POSPrinter

Model	Serial	USB	Ethernet	Bluetooth	Wireless LAN
A11 Prime	O	O	O	O	O

2-4 Java Environment

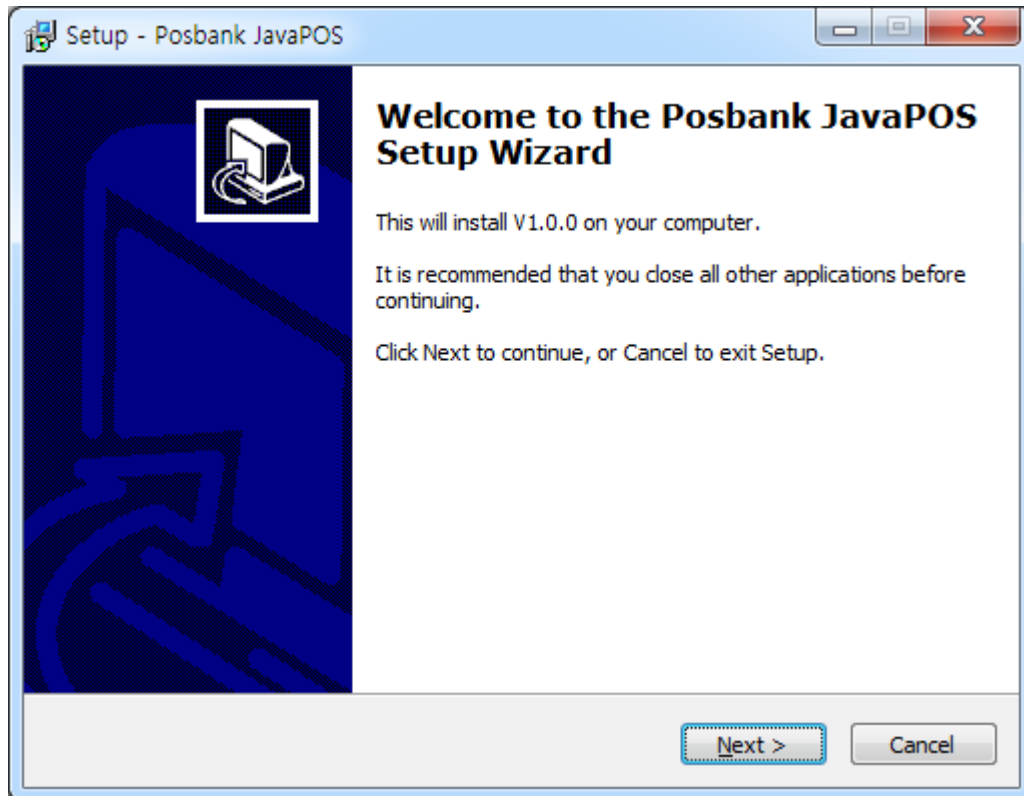
- JRE(Java Runtime Environment) 32bit Version 1.5 or higher

3. Installation

The Posbank JavaPOS driver includes the JavaPOS Device Control, JavaPOS Device Service, JCL(Java Configuration Loader) Utility, manual, test program, sample source, etc.

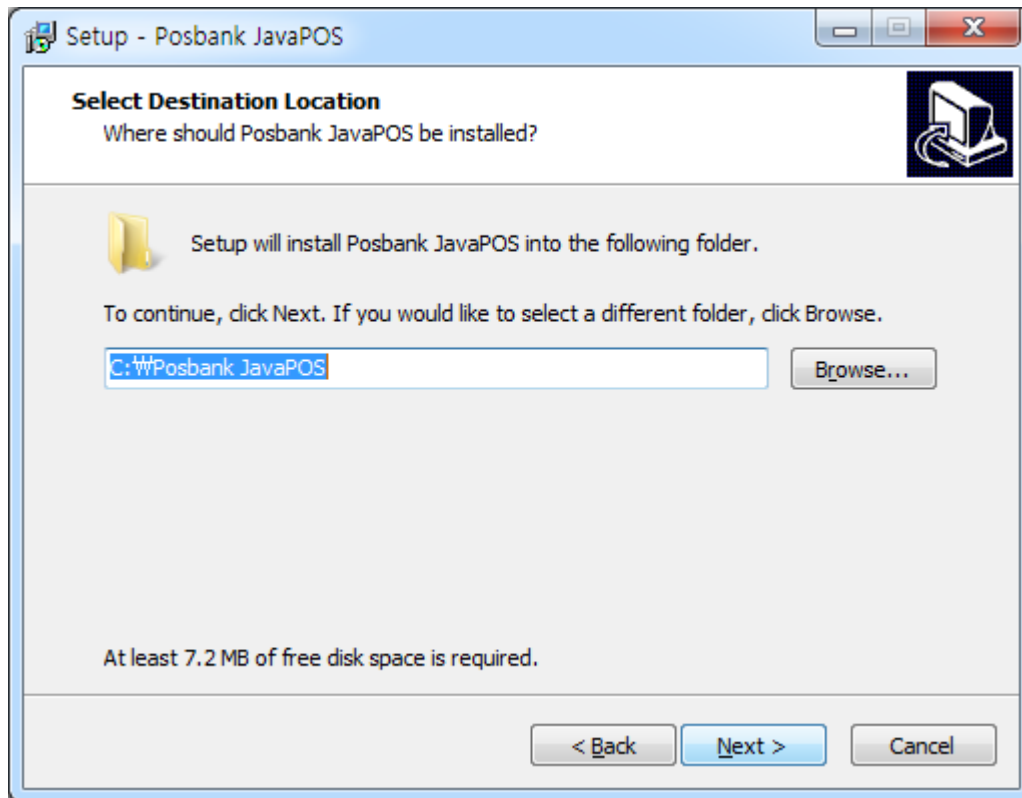
3-1 JavaPOS Driver Installation

- 1) Run the JavaPOS Driver installation file.
- 2) “Welcome” dialog displayed.

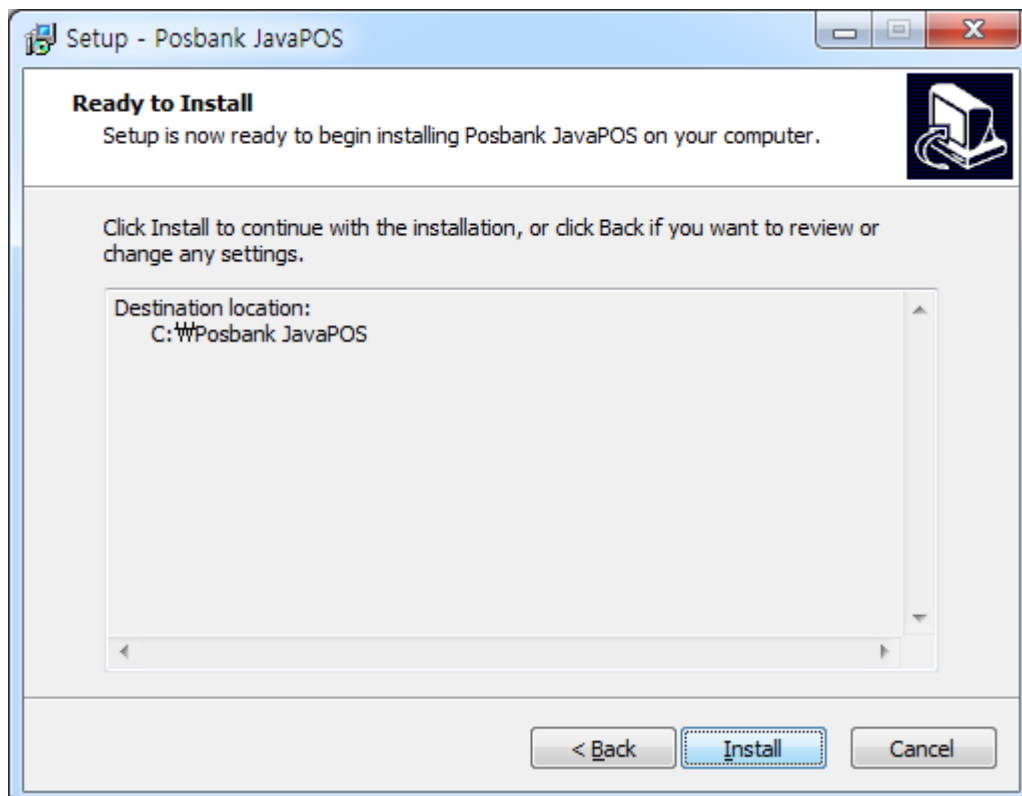


3) Select the installation folder.

The default folder: “C:\Posbank JavaPOS\”



4) Ready to install.



3-2 JDK & JRE installation

1) JDK & JRE Installation

Download the 1.5 or higher version of the JDK for Windows 32bit from <http://java.sun.com/javase/downloads/index.jsp>

2) Run “jdk-XXX-windows-i586-X.exe” and install the JDK.

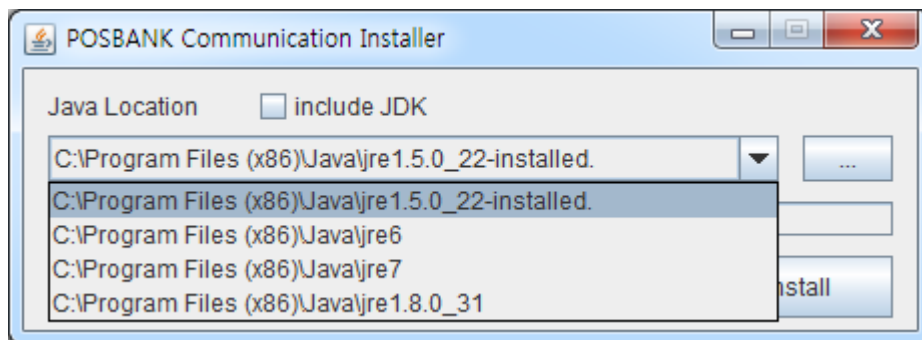
*** The JRE is installed automatically during JDK installation and thus no separate JRE installation is required.**

3-3 Java communication files installation

1) Run “CommInstaller.exe” file on installation path.

*** Run as administrator.**

2) Check the JRE(Java Runtime Environment) location.



*** JRE location will be displayed. In case of various JRE installation, select one of the JRE location in Combo-box as above image. Unless JRE location does display in Combo Box, Click “Change install location” button. Then assign the correct JRE location.**

3) Click “Run Install” button.

4) As soon as installation is complete, "Installation is completed" dialog message will be displayed.



*** In case that "Installation is failed" message will be popped up, installation doesn't complete correctly. JavaPOS driver can not be worked properly.**

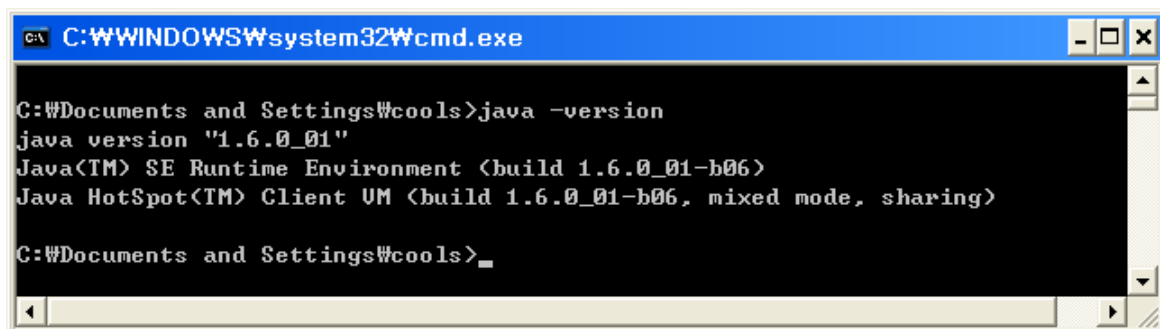
5) 2 files below will be installed in a folder which includes CommInstaller.exe file.

- posbank-jclutility.bat : batch file for running JavaPOS Configuration Loader
- posbank-testprogram.bat : batch file for running JavaPOS test program

3-4 Environment Variables configuration

*** You can use posbank-jclutility.Bat and posbank-testprogram.Bat
In Posbank JavaPOS Driver without the setting of the environment variables.**

- 1) Select Start -> Settings -> Control Panel -> System.
*** System may not appear if using Windows XP. In such cases, click “Switch to Classic View” at the top left of the Control Panel, and the System icon should appear.**
- 2) In the Advanced tab, click the “Environment Variables” button.
- 3) Add the following content in the path value of both the user environment variables and the system environment variables.
To Be Added: <JRE Location on CommInstaller>\bin
Ex) C:\Program Files\Java\jre1.6.0\bin
- 4) Reboot the computer.
- 5) Select Start -> Programs -> Accessories -> Command Prompt.
- 6) Enter “java -version” in the command prompt window.
- 7) If the following appears, installation has been completed successfully.



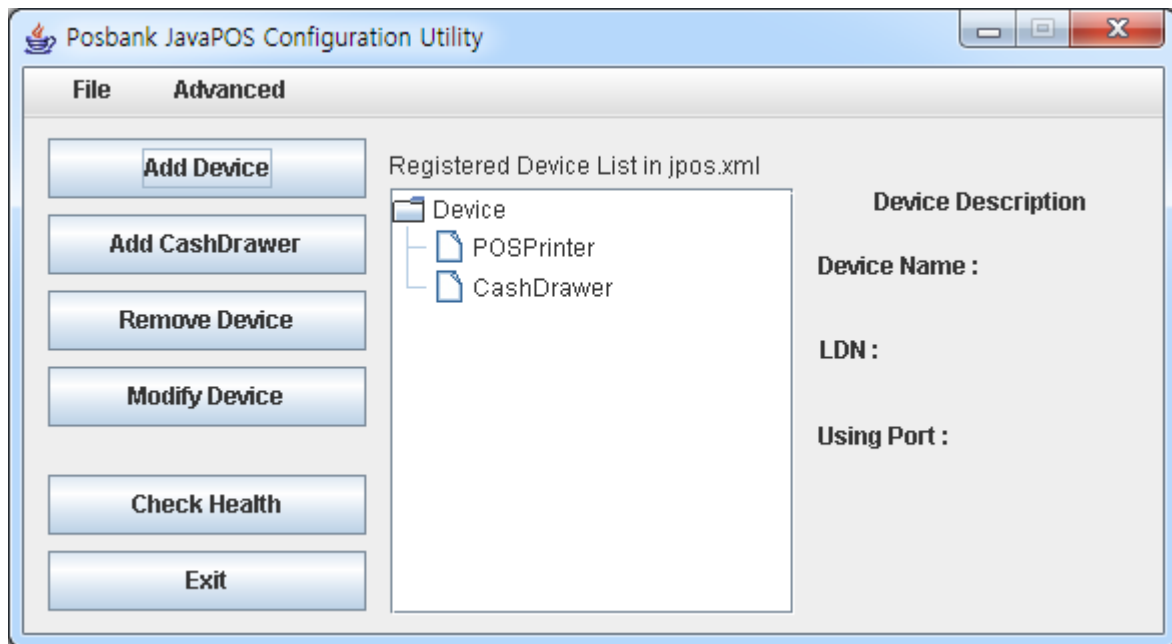
```
C:\WINDOWS\system32\cmd.exe

C:\Documents and Settings\Wcools>java -version
java version "1.6.0_01"
Java(TM) SE Runtime Environment (build 1.6.0_01-b06)
Java HotSpot(TM) Client VM (build 1.6.0_01-b06, mixed mode, sharing)

C:\Documents and Settings\Wcools>
```

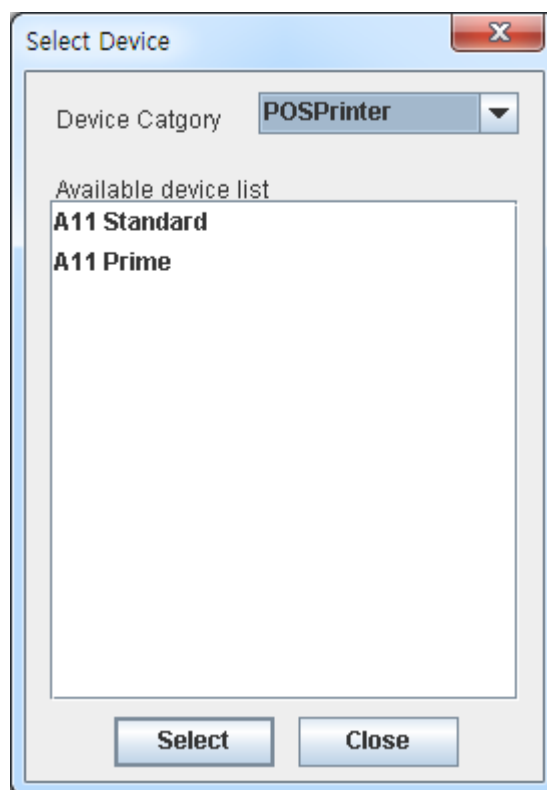

4. JavaPOS Configuration Utility Setting

Double click “posbank-jclutility.bat”.
The JavaPOS Configuration Utility begins.

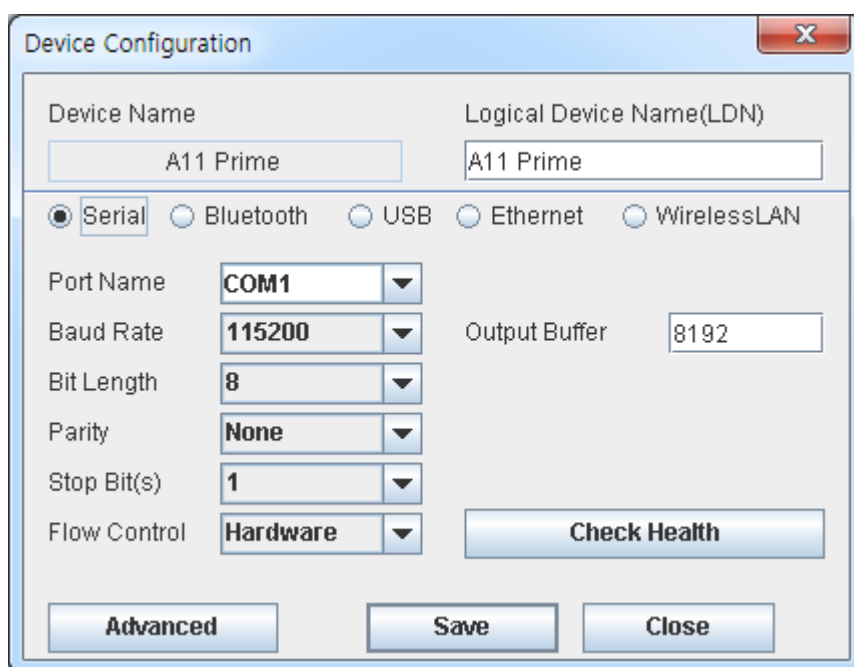


4-1 POSPrinter Registration

1) Click “Add Device” button and select ‘POSPrinter’ in Device Category.



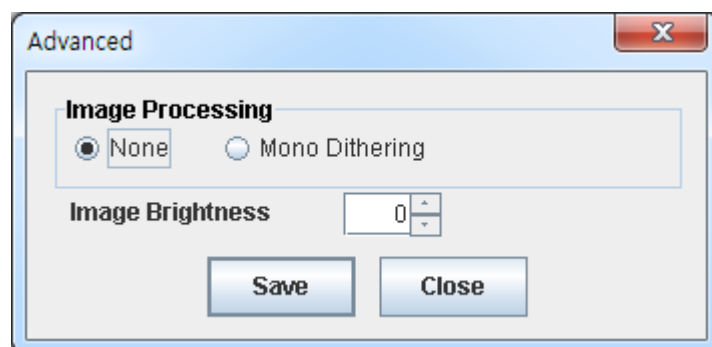
2) Click the “Select” button after choosing one of the available device lists.



The "Device Configuration" dialog box is shown. It has a title bar with a close button (X). The dialog is divided into two main sections. The top section contains two text input fields: "Device Name" and "Logical Device Name(LDN)", both containing the text "A11 Prime". Below these are five radio buttons: "Serial" (selected), "Bluetooth", "USB", "Ethernet", and "WirelessLAN". The bottom section contains several dropdown menus: "Port Name" (set to "COM1"), "Baud Rate" (set to "115200"), "Bit Length" (set to "8"), "Parity" (set to "None"), "Stop Bit(s)" (set to "1"), and "Flow Control" (set to "Hardware"). To the right of these dropdowns is a text input field for "Output Buffer" set to "8192". At the bottom of the dialog are three buttons: "Advanced", "Save", and "Close". A "Check Health" button is also present to the right of the "Flow Control" dropdown.

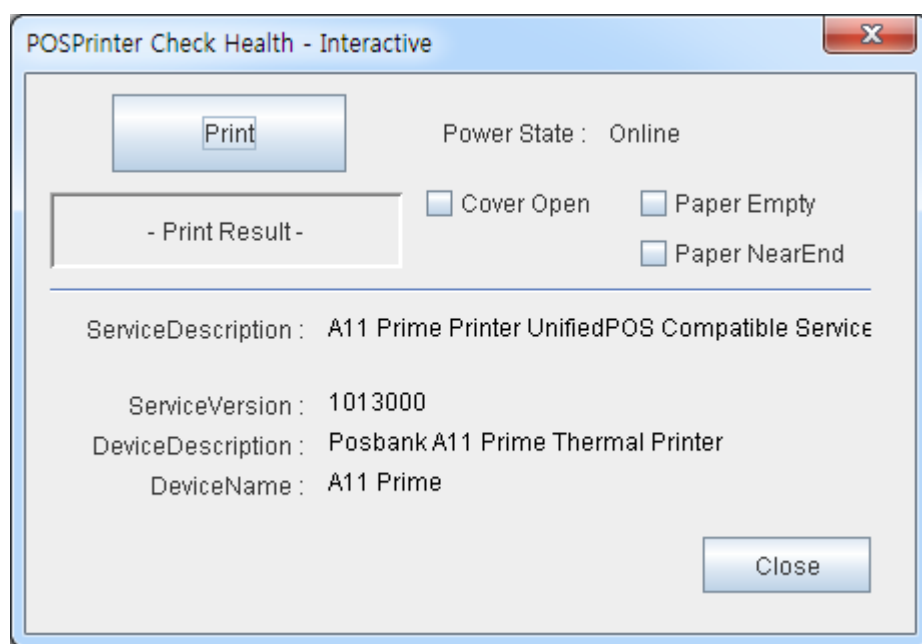
3) Set the communication environment of the connected printer and click “Save” button.

4) To apply the dithering when you want to print the image, please select the following Advanced dialog.



The "Advanced" dialog box is shown. It has a title bar with a close button (X). The dialog contains a section titled "Image Processing" with two radio buttons: "None" (selected) and "Mono Dithering". Below this is a section titled "Image Brightness" with a numeric input field set to "0" and up/down arrow buttons. At the bottom of the dialog are two buttons: "Save" and "Close".

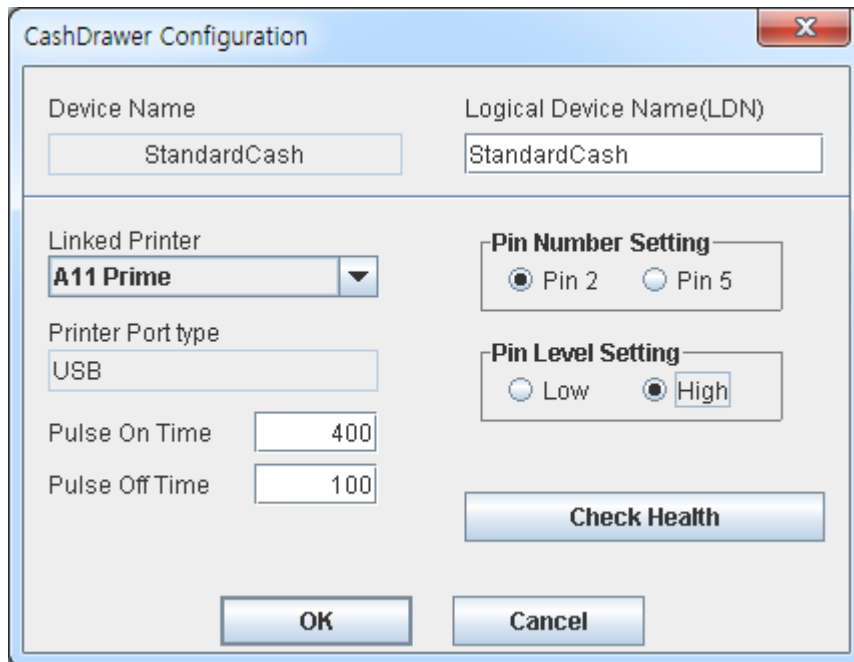
5) Click “Check Health” to see if the printer operates properly.



<POSPrinter - Check Health Dialog>

4-2 CashDrawer Registration

1) Click “Add CashDrawer” button.

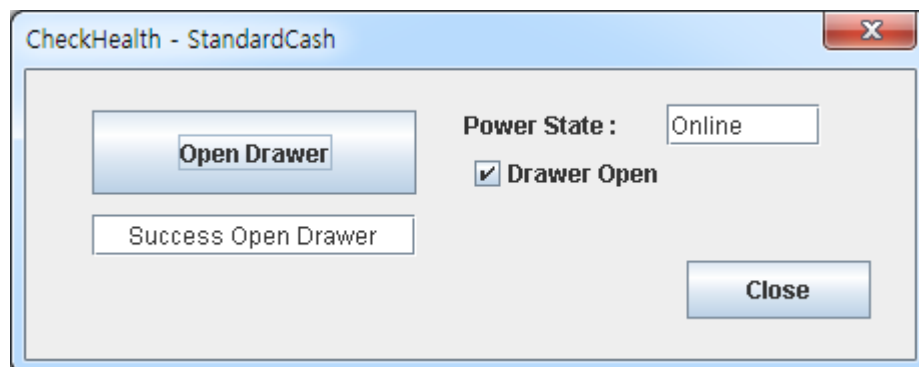


The 'CashDrawer Configuration' dialog box contains the following fields and controls:

- Device Name:** Text box containing 'StandardCash'.
- Logical Device Name(LDN):** Text box containing 'StandardCash'.
- Linked Printer:** A dropdown menu showing 'A11 Prime'.
- Printer Port type:** Text box containing 'USB'.
- Pulse On Time:** Text box containing '400'.
- Pulse Off Time:** Text box containing '100'.
- Pin Number Setting:** Radio buttons for 'Pin 2' (selected) and 'Pin 5'.
- Pin Level Setting:** Radio buttons for 'Low' and 'High' (selected).
- Check Health:** A button to check the communication status.
- OK and Cancel:** Buttons at the bottom to save or discard changes.

2) Select the Printer which works with CashDrawer in ‘Linked Printer’ Combo-Box and set the Pin Number and Pin Level.

3) Save the settings by “OK” button click or check if communication status through the CashDrawer is normal by “CheckHealth” button.

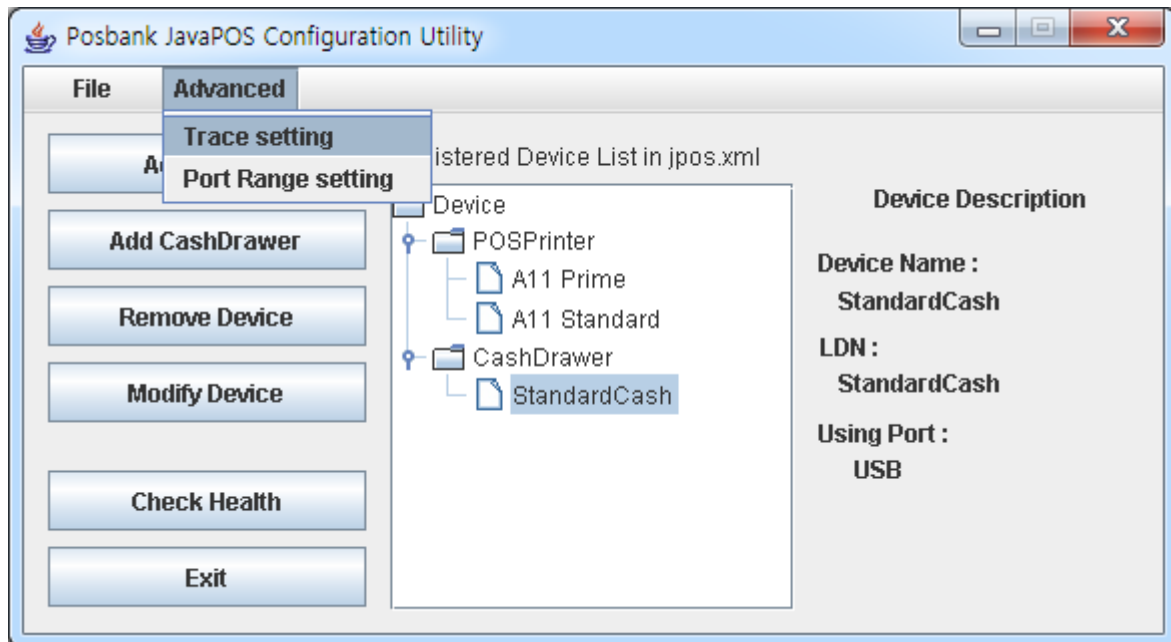


The 'CheckHealth - StandardCash' dialog box displays the following information and controls:

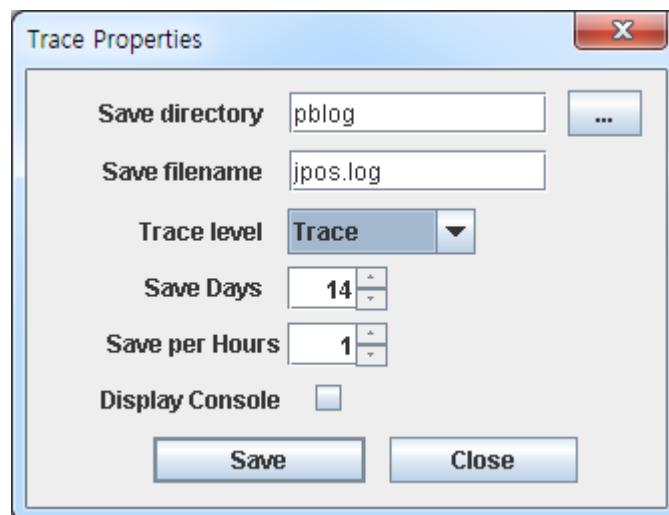
- Open Drawer:** A button to attempt opening the drawer.
- Success Open Drawer:** A text box showing the result of the 'Open Drawer' action.
- Power State:** A text box showing 'Online'.
- Drawer Open:** A checked checkbox indicating the drawer's status.
- Close:** A button to close the dialog.

4-3 Trace Setting

*** Please set the trace setting when it's necessary only.
Otherwise Hard Drive capacity will be lack of containing other files due to
the trace function.**

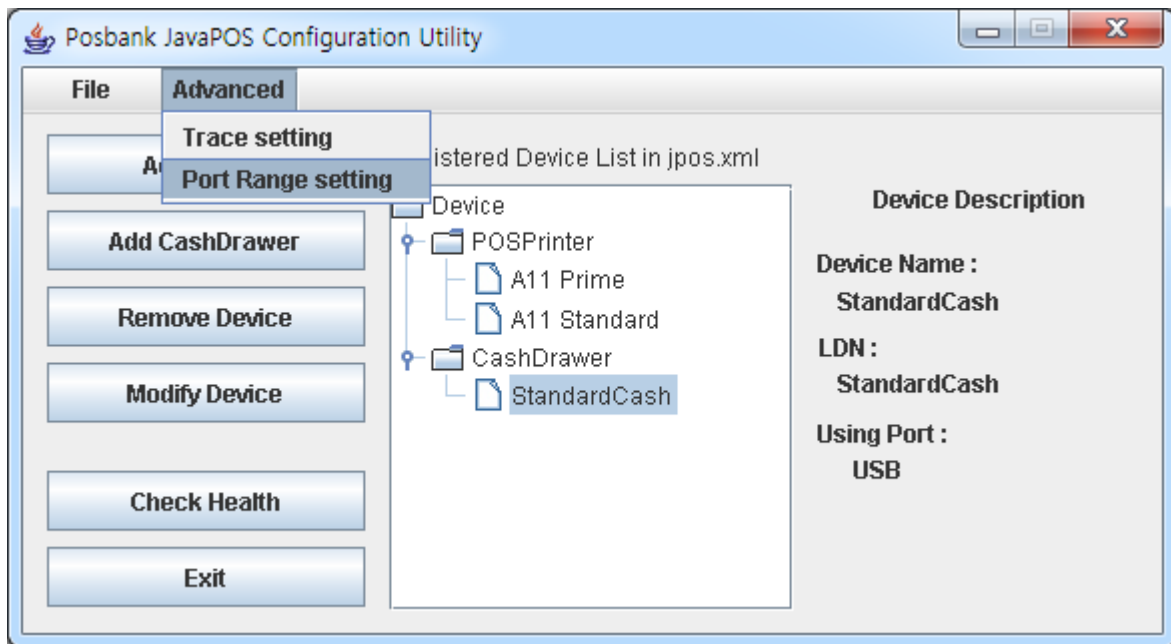


1) Select the trace level in combobox and click “Save” button.

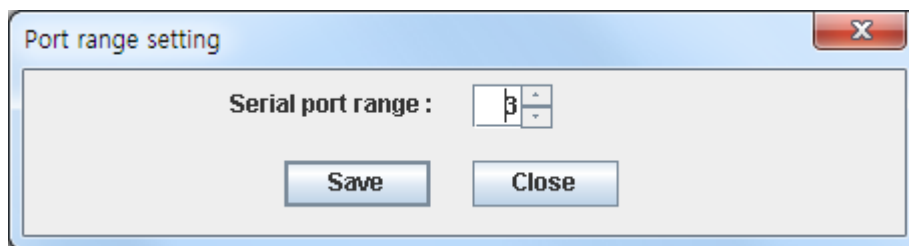


4-4 Port Range Setting

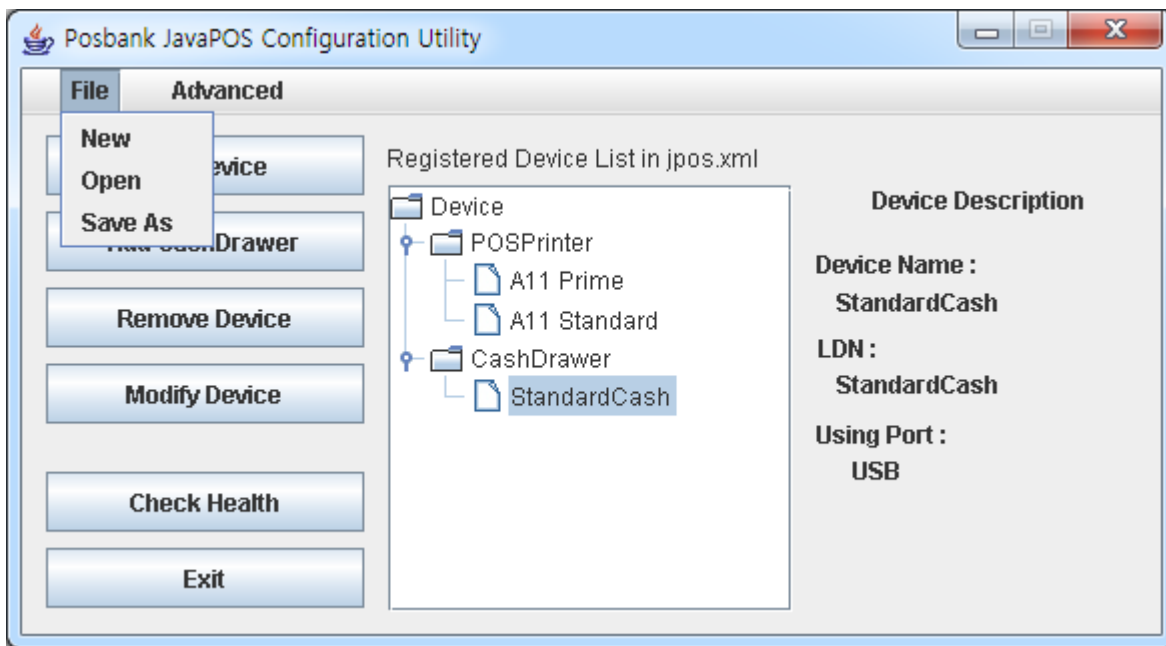
‘Port Range setting’ can be adjustable according to the Serial or Bluetooth communication setting option. So, adjust the port number if there’s no available port in system.



1) Input the maximum COM port number for Serial or Bluetooth communication.



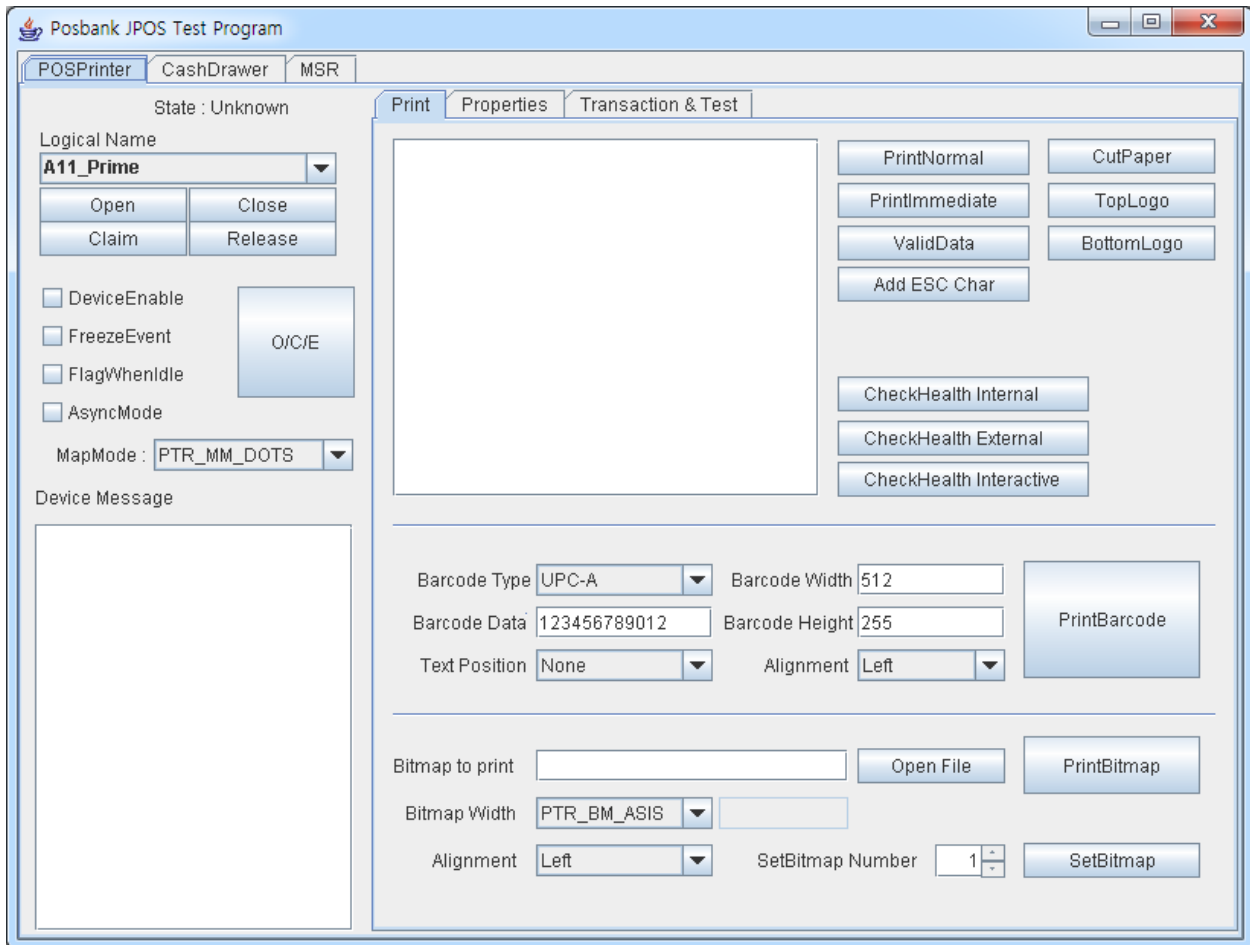
4-5 Jpos.xml New / Open / Sava As



- 1) New – Create the new jpos.xml file. New jpos.xml file is available.
Then previous registered device will be disappeared.
- 2) Open – Open the existed jpos.xml file.
Device information can be called by different jpos.xml file and device information will be displayed from the new jpos.xml file.
- 3) Save As – Save the present setting by different name.
Present setting can be saved as not jpos.xml file but other name.

5. Posbank JPOS Test Program

Double click “posbank-testprogram.bat”.
The JavaPOS test program begins.



- 1) Logical Name: Select the test device in the list.
- 2) Click “Open” button to open JavaPOS device service.
- 3) Click “Claim” button to check the status of device.
- 4) Check “Device enabled” check box.
- 5) You can test each function with each button.

6. Sample Source

The content of the “Sample Source” folder is as follows.

- sampleimage.bmp : sample image
- *.java : java source file

6-1 POS Printer Samples

- | | |
|-------------------------------|--|
| 1) PrintNormalSample. java | PrintNormal function sample source |
| 2) PrintBitmapSample. java | PrintBitmap function sample source |
| 3) PrintBarcodeSample. Java | PrintBarcode function sample source |
| 4) CutPaperSample. java | CutPaper function sample source |
| 5) ESCSequenceSample. java | ESC Sequence sample source |
| 6) CheckHealthSample. java | CheckHealth function sample source |
| 7) POSPrinterEventSampe. java | POSPrinter-related event sample source |

6-2 CashDrawer Samples

- | | |
|---------------------------------|--|
| 1) OpenCashdrawerSample. java | Opendrawer function sample source |
| 2) CashdrawerEventsSample. java | Cashdrawer-related event sample source |

7. Precautions

- The Posbank JavaPOS software package that is installed supports devices offered by Posbank. Normal operation is not guaranteed when used with other devices.
- Errors in operation may occur if installed with another JavaPOS Driver.
- ※ If an unknown issue occurs, either contact the dealer or submit an inquiry at the website below for fast response.
www.posbank.com